

# BALCO ALPHA 5-DECK Cable System Variac & Linkage Installation

Product Information Bulletin #2768  
(August 26, 1994)

The upper take-up assembly can be mounted using existing holes. There may be a 1/16" misalignment in the mount holes that can be corrected by filing out the mount hole in the upper take-up bracket.

The holes to mount the lower take-up assembly and the twin castor assembly at the base of the column must be lowered (see figure 1).

The 3/8" diameter hole for the spring pin is optional. The one detailed on the drawing will approximate the normal operational voltage to the motors using the Alpha variacs. The 3/8" hole for the upper take-up will not be placed correctly for the Alpha variac. Use the hole layout for the lower take-up to place it correctly.

The holes to mount the variac to the bottom arm and on the leg must be added. A drill and tap are included (see figures 2 and 3).

Also included is a set of Alpha System manuals. Use the parts manual as an aid in mounting the new components and for ordering replacement parts in the future. All of the components provided are stock Alpha System parts except the electrical jumper. The operation manual contains adjustment procedures that may be useful.

The electrical jumper will connect the 9-pin receptacle on the variac to the existing socket in the base of the column. The 4-pin receptacle on the variac, which is the table port on the Alpha System, will not function on your system.

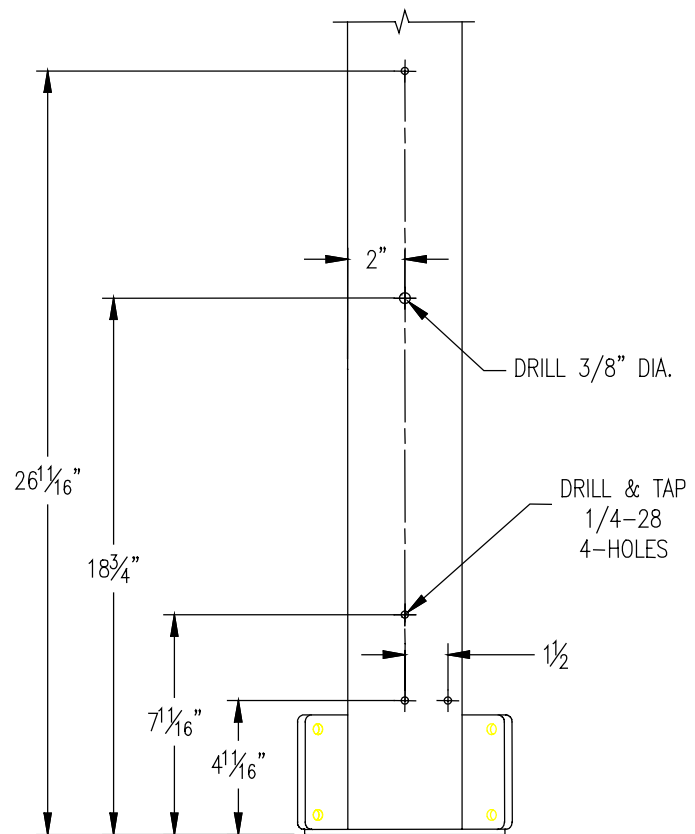
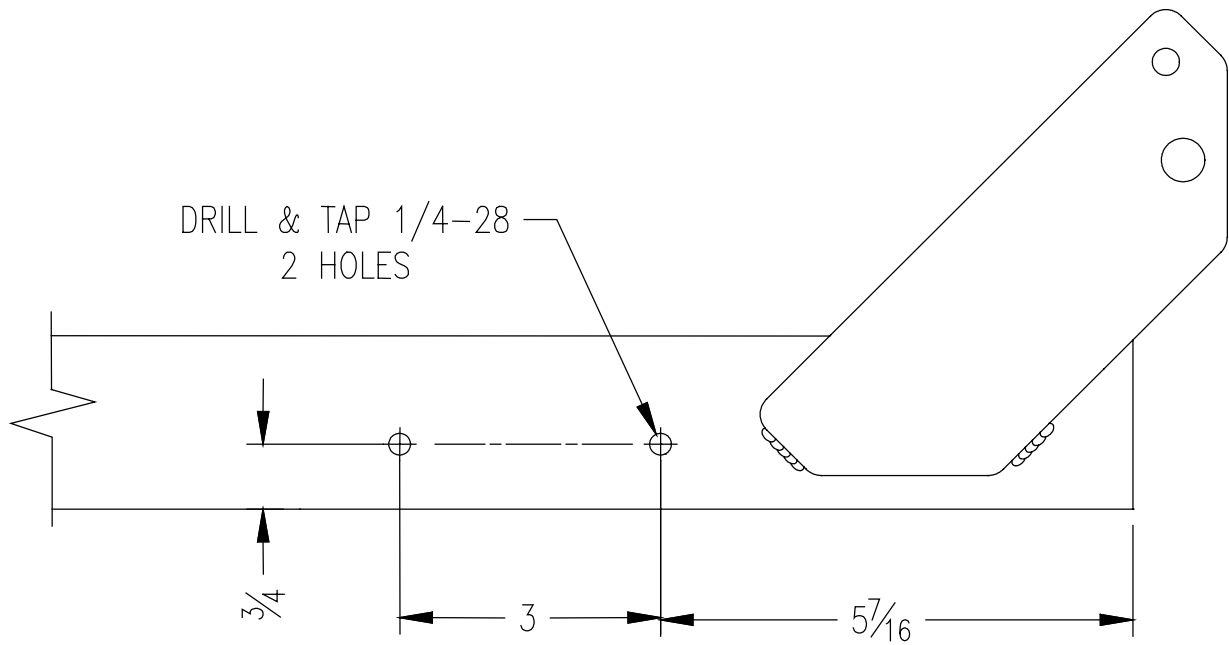
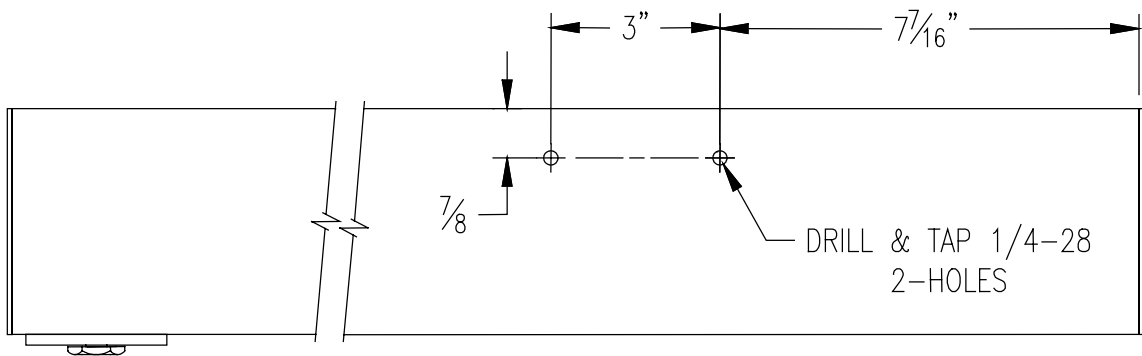


Figure 1



**Figure 2 - Arm Modification**



**Figure 2 - Leg Modification**