

# LOOP MAKE-UP GUIDE

## Retrofit Instructions #3792

LOOP PLATTER SYSTEMS

### Tools Needed:

- |                           |                         |
|---------------------------|-------------------------|
| 1. Phillips screwdriver   | 2. Electric drill       |
| 3. Clamp                  | 4. 7/16 wrench & socket |
| 5. 3/8" socket            | 6. 1/8" Allen wrench    |
| 7. Wire cutters/strippers |                         |

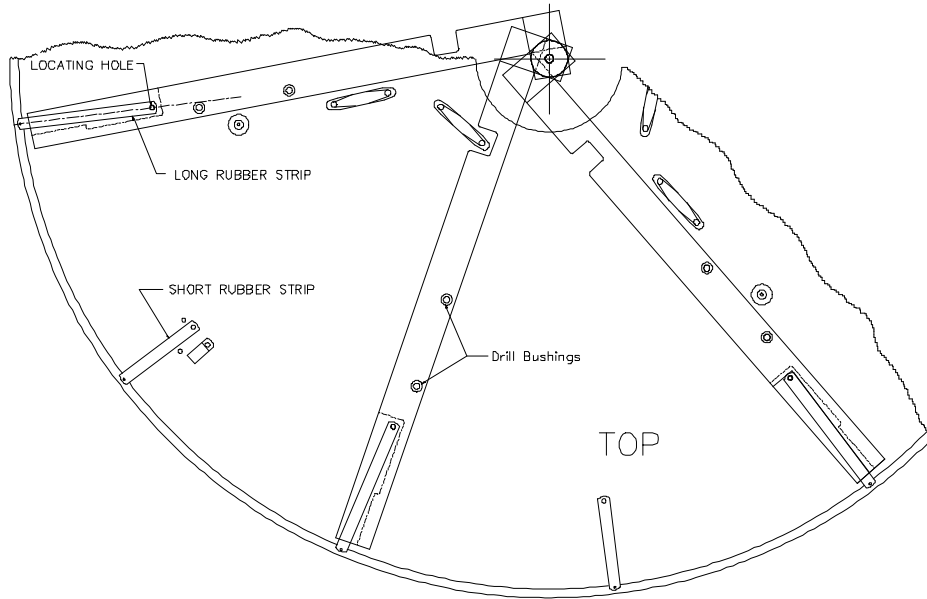
### Installing Loop Rewind Arm

1. Remove the column mounted aluminum Feed Pulley from its swivel base.
2. Place this Feed Pulley onto the pulley shaft at the end of the new Rewind Arm and secure it with the included E-ring.
3. Remove the two 10-32 screws from the column mounted Feed Pulley base and replace it with the new Rewind Arm. The green ground wire should be grounded by use of the bottom 10-32 screw.
4. Adjust the two pulleys on the Rewind Arm to allow for a smooth film path from the column to the disk.

### Updating The Tilt Section Assy.

**Note:** Refer to page 13&14 of the Loop/AP Platter Systems Parts Manual for illustrated parts breakdown.

1. Remove the Tilt Section Sub-Assy. (38) and all attached components from the Push Arm Clevis.
2. Remove items 15, 33, 34, 35, 36, 39, 40, & 41 from the old Tilt Arm Assy. and add them to the new Tilt Arm Assy.
3. Attach the new Tilt Arm Assy. to the Push Arm Clevis.
4. Properly adjust the Push Arm as per **Push Arm Lateral Adjustment** & **Pivot Arm & Push Arm Vertical Adjustment** section of the Loop/AP Operation Manual.



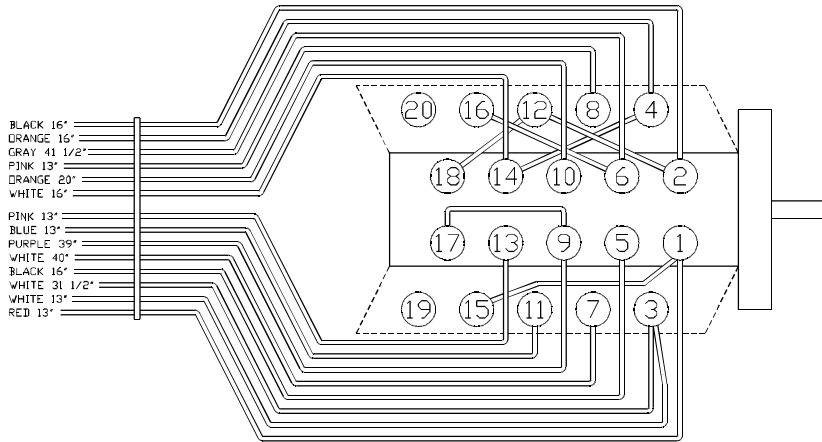
## Drilling Holes

1. Place the drill fixture spindle into the arm hub and align the locating hole with the inboard rivet of any Long Rubber Strip as shown above.
2. Clamp the outboard end of the drill fixture to the disk to prevent the fixture from moving while drilling.
3. Drill two 11/32" holes through the disk by utilizing the two drill bushings in the drill fixture.
4. Repeat this process for the other five Long Rubber Strip locations.
5. Remove the sharp edges from all twelve drilled holes.
6. The six Make-up Guides can now be used as outlined in the Loop/AP Operation Manual.

**NOTE:** Once all of the holes have been drilled for the Make-up Guides the mounting plate for the Make-up Pins can be removed from the back of the column.

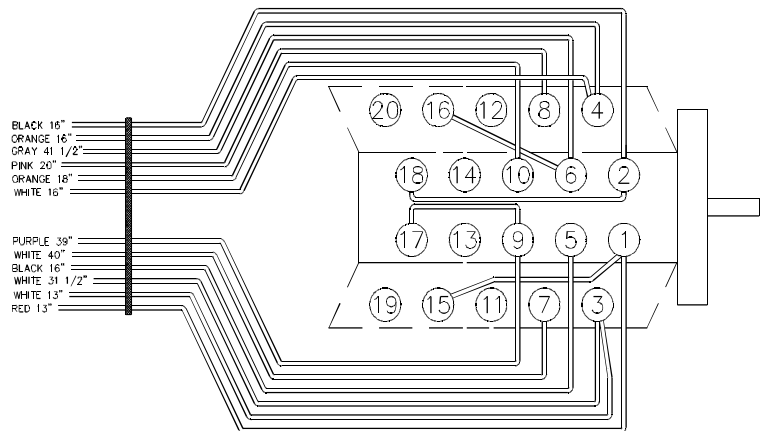
When the Make-up guides are used the Loop Disk can no longer be made-up by using the table or damage may occur. The following outlines a simple wire change that will not allow table make-up for the Loop Disk, but will allow table make-up for the other two disks.

Figure 2 shows the mode selector switch wiring prior to Make-up Guides. After converting to Make-up Guides the switch needs to be rewired as shown in Figure 3.



**Figure 2**  
Prior to Make-up Guides

**Figure 3**  
With Make-up Guides



## Updating Mode Selector Switch Wiring

1. Remove the Mode Selector switch from its enclosure.
2. Remove the pink wire from terminal 13 and the blue wire from terminal 11.
3. Cut a couple of inches off of each wire and tape each end separately.
4. Remove the black jumpers from terminals 12-18, 2-12, and 4-14.
5. Insert one of the removed jumpers from terminals 2-18.
6. Take the white wire off of terminal 14 and put it onto terminal 4.
6. Replace the Mode Selector Switch.

The Make-up Guide retrofit is now complete. Refer to the Loop/Ap Operation Manual for proper operating procedures.