

# POWER SUPPLY ISOLATION DIODE CARD RETROFIT INSTALLATION INSTRUCTIONS

PRODUCT INFORMATION BULLETIN # 4449  
PS DIODE CARD MODULE

PS DIODE CARD KIT # 4450

**Purpose:** The power supply Isolation Diode Card was added to prevent a failed power supply from damaging the remaining power supplies.

**Note:** When a DMC power supply board fails, the remaining two boards will back feed a power signal to the malfunctioning board. Because of this back feed, the red LED on the failed board will continue to stay lit. In some cases the drain off of power from the malfunctioning board can cause damage to the remaining boards, although this has been fairly rare. The isolation diode eliminates the path of the back feed.

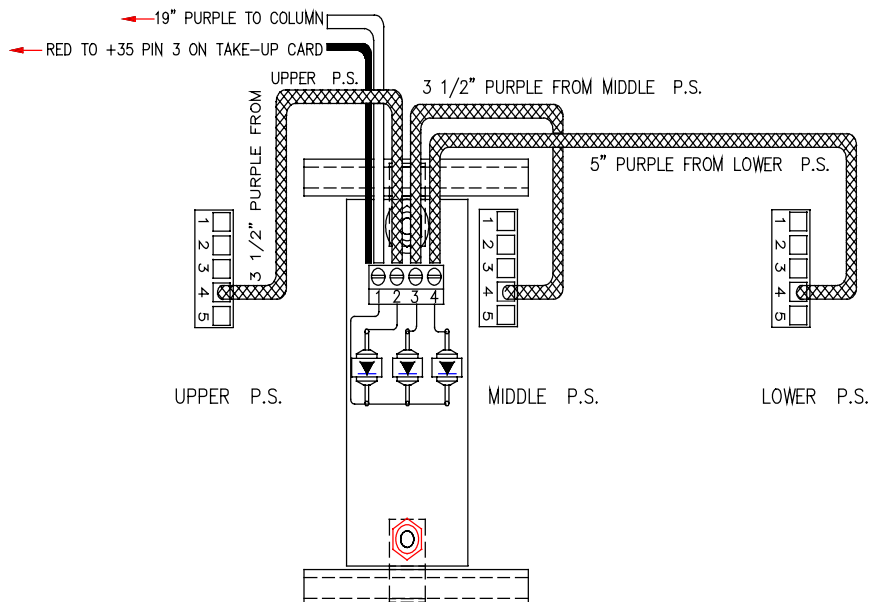


Figure 2

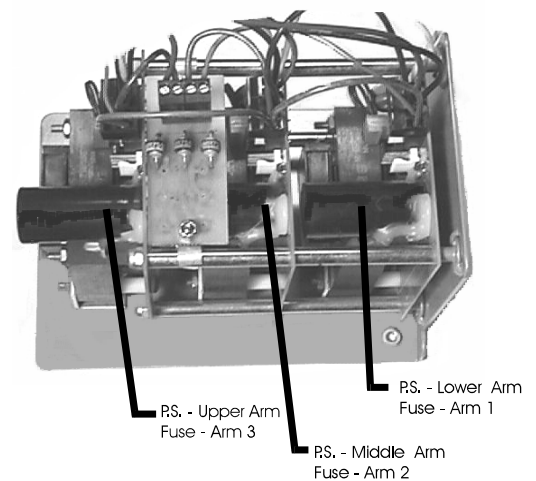


Figure 1

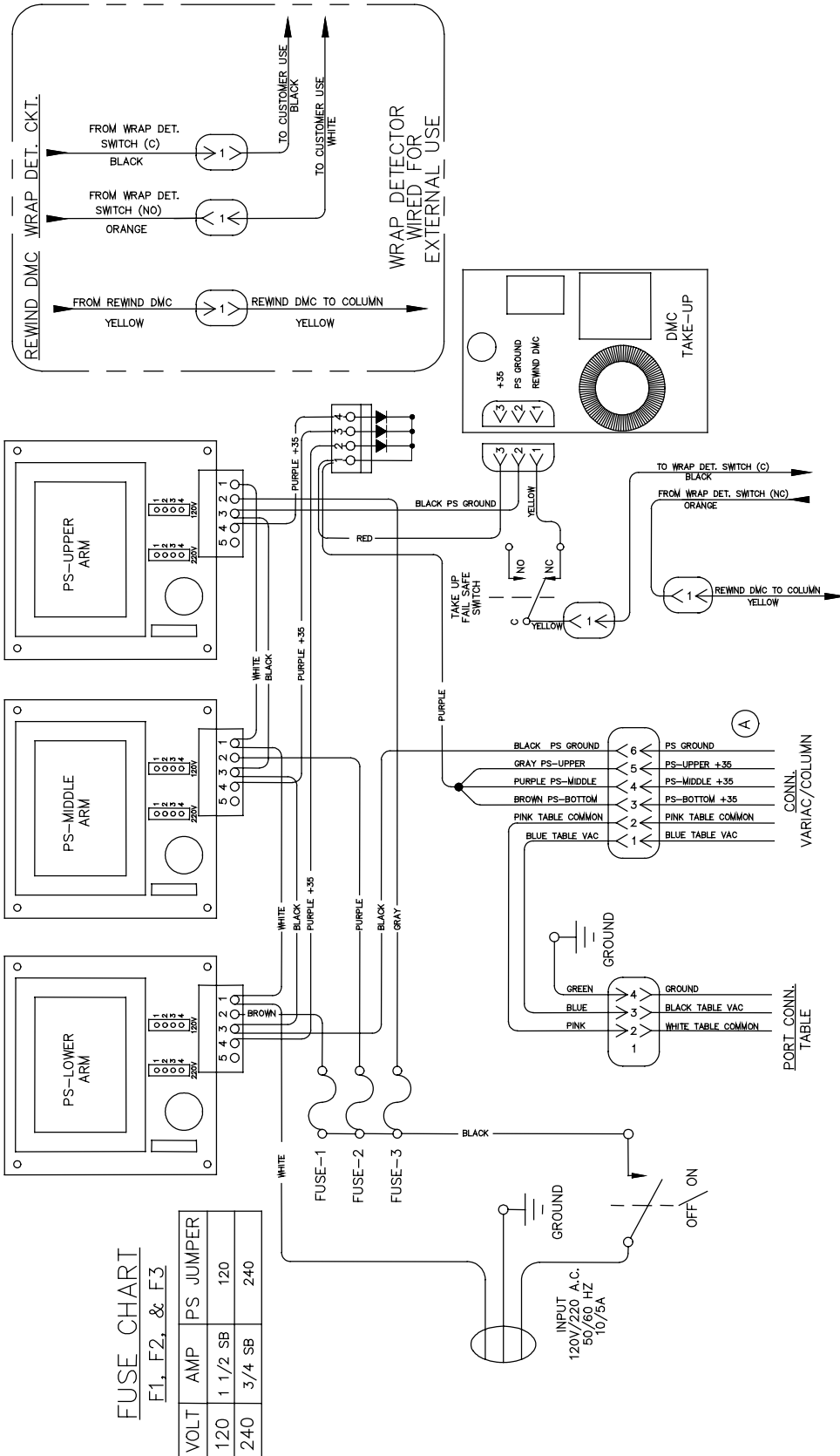
## Installation:

1. Unplug the power supply harness.
2. Install the diode card onto the power supply rails as shown in figure 2.
3. Remove the two 3-1/2" purple jumper wires and the 19" purple output wire from terminal 4 of power supply connectors.
4. Remove the two 3-1/2" red jumper wires and the small red output wire feeding the take-up card, from terminal 5 of power supply connectors.

**Note:** Failure to remove these wires will result in control card damage.

5. Install the 3 purple wires from the diode card terminal 2, 3, 4, into terminal 4 of the appropriate power supply connectors as shown in figure 1.
6. Install the 19" purple output wire and the small red output wire feeding the take-up card, into terminal 1 of the Diode Card as shown in figure 1.

**Note:** Terminal 5 of the power supply connectors are no longer used.



**FUSE CHART**  
F1, F2, & F3

VOLT	AMP	PS JUMPER
120	1 1/2 SB	120
240	3/4 SB	240