

VARIAC ASSEMBLY, PRE APRIL 2000

Installation & Parts List #5176

The Variac Assembly, Pre April 2000 is designed to be used on all Alpha 3, Alpha 5 and AP 5 Platter systems manufactured from 1983 through April 2000. The Variac Assembly, Pre April 2000 has arm and leg mounts, male and female table ports and is wired to fit all platter systems listed above. See Figure 1 for the correct connections.

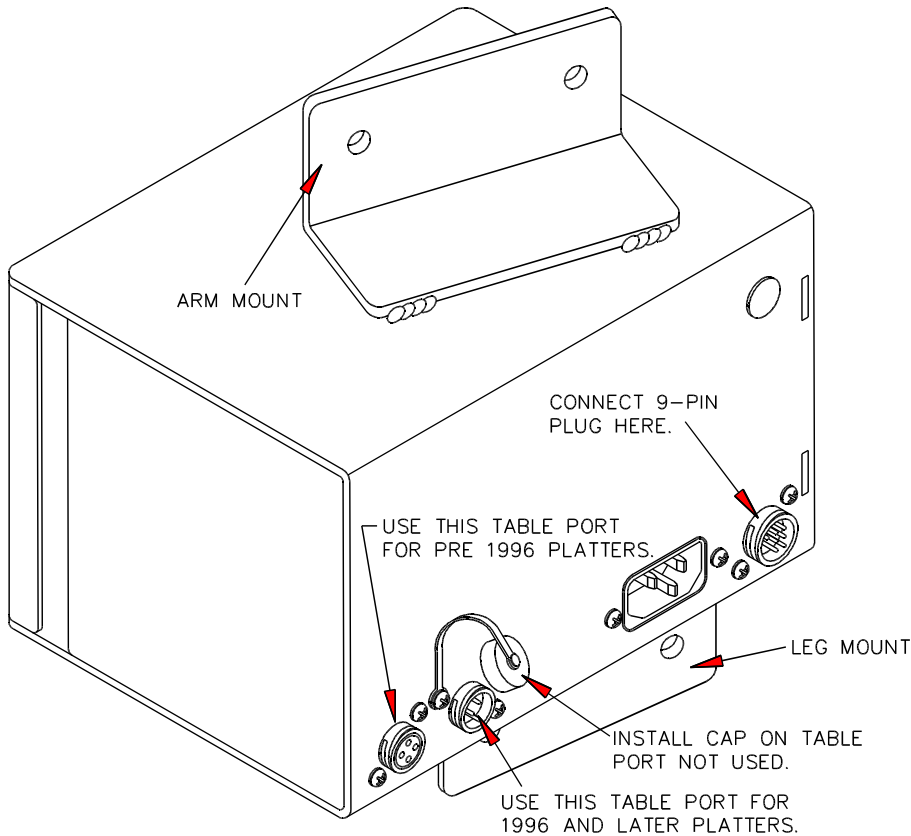


Figure 1

Note: A Power Supply Decal, #2059 is included with the assembly. When this Variac Assembly is used as a replacement for an arm mount or leg mount variac on an Alpha 5 Deck or an AP 5 Deck Platter system, the decal must be installed as shown in Figure 2. The decal is **NOT** used on Alpha 3 Deck Platter systems.

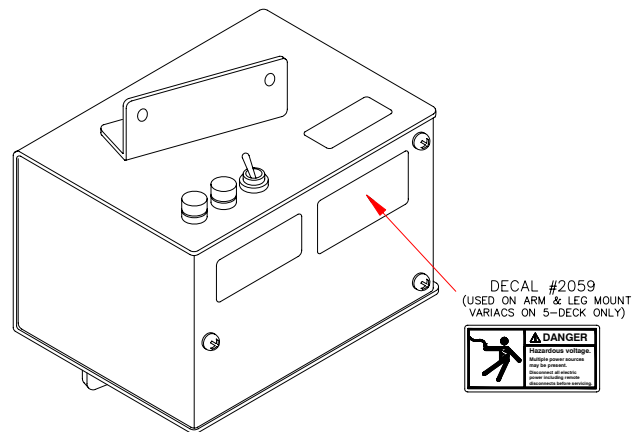
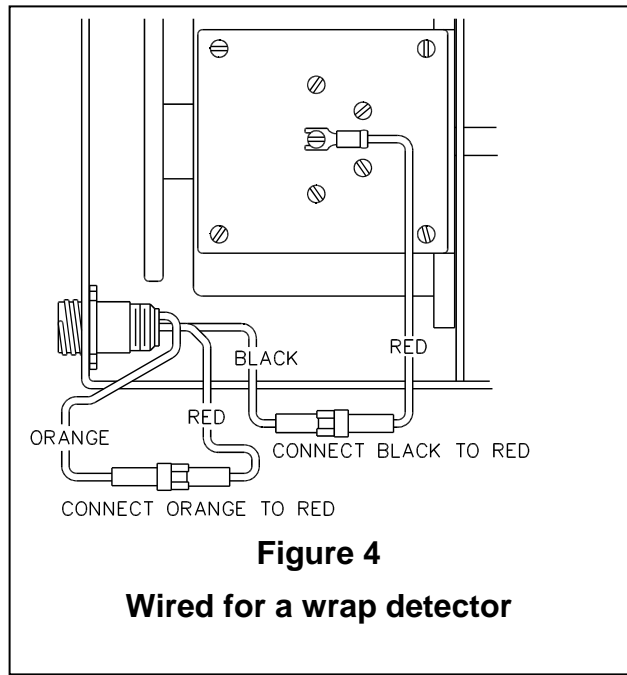
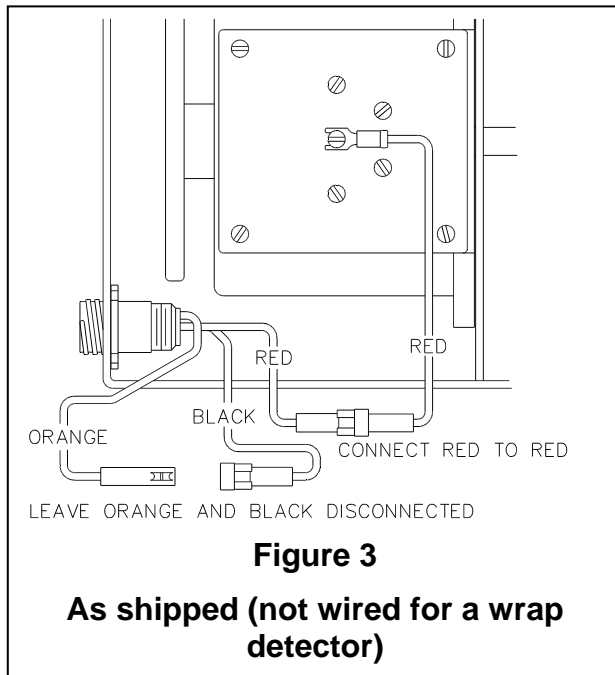


Figure 2

Note: When an optional wrap detector is used on your platter system, the Variac must be wired for a wrap detector. This replacement variac is shipped **not** wired for a wrap detector (see Figure 3). If your platter system is now wired for a wrap detector and a wrap detector is installed, then you must reconfigure the wiring as shown in Figure 4.



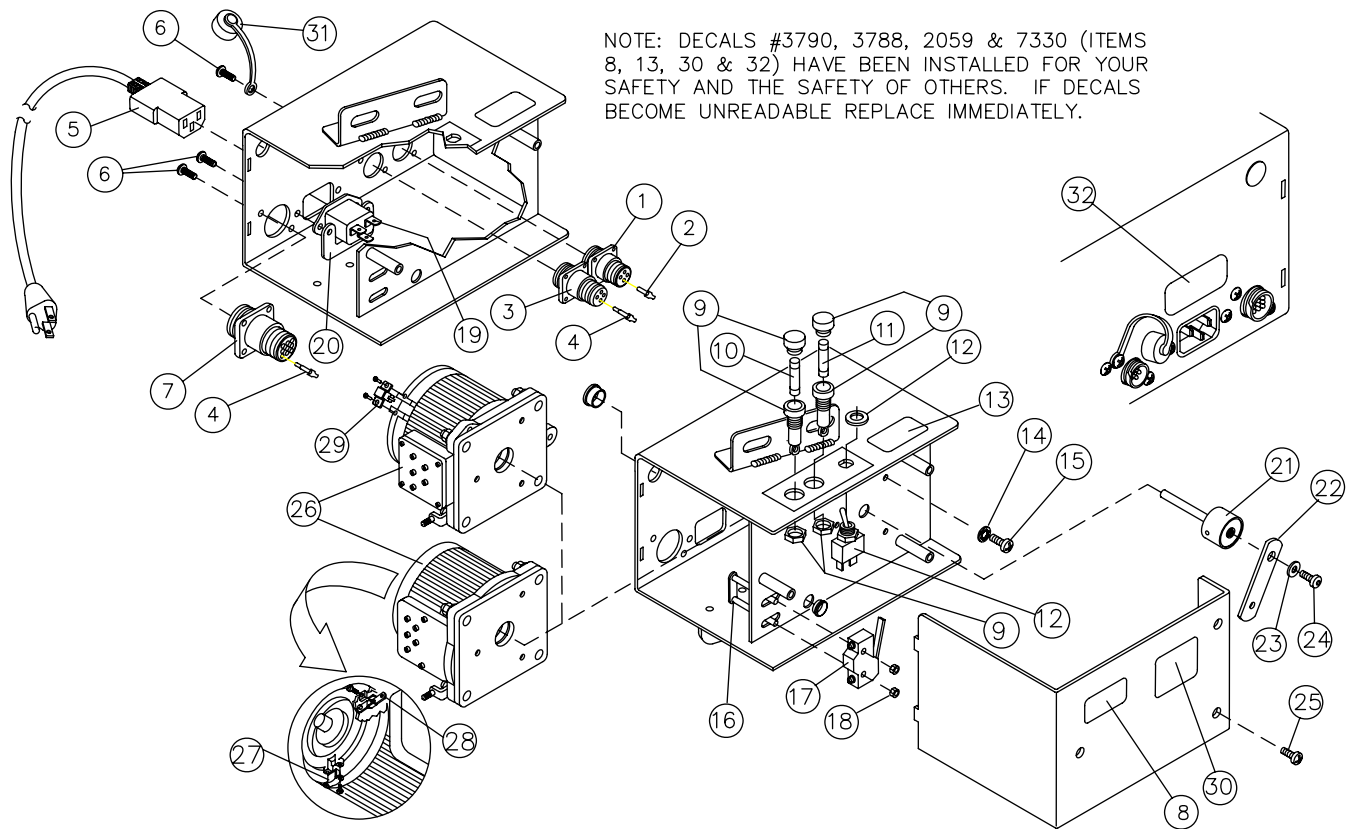
To determine if your platter is now wired for a Wrap Detector count the number of contacts in the 9-pin plug connecting the column to the variac.

Column plugs for Arm mount variacs on platters **wired** for a Wrap Detector have **seven** contacts.

Column plugs for Arm mount variacs on platters **not wired** for a Wrap Detector have **five** contacts.

Column plugs for Leg mount variacs on platters **wired** for a Wrap Detector have **five** contacts.

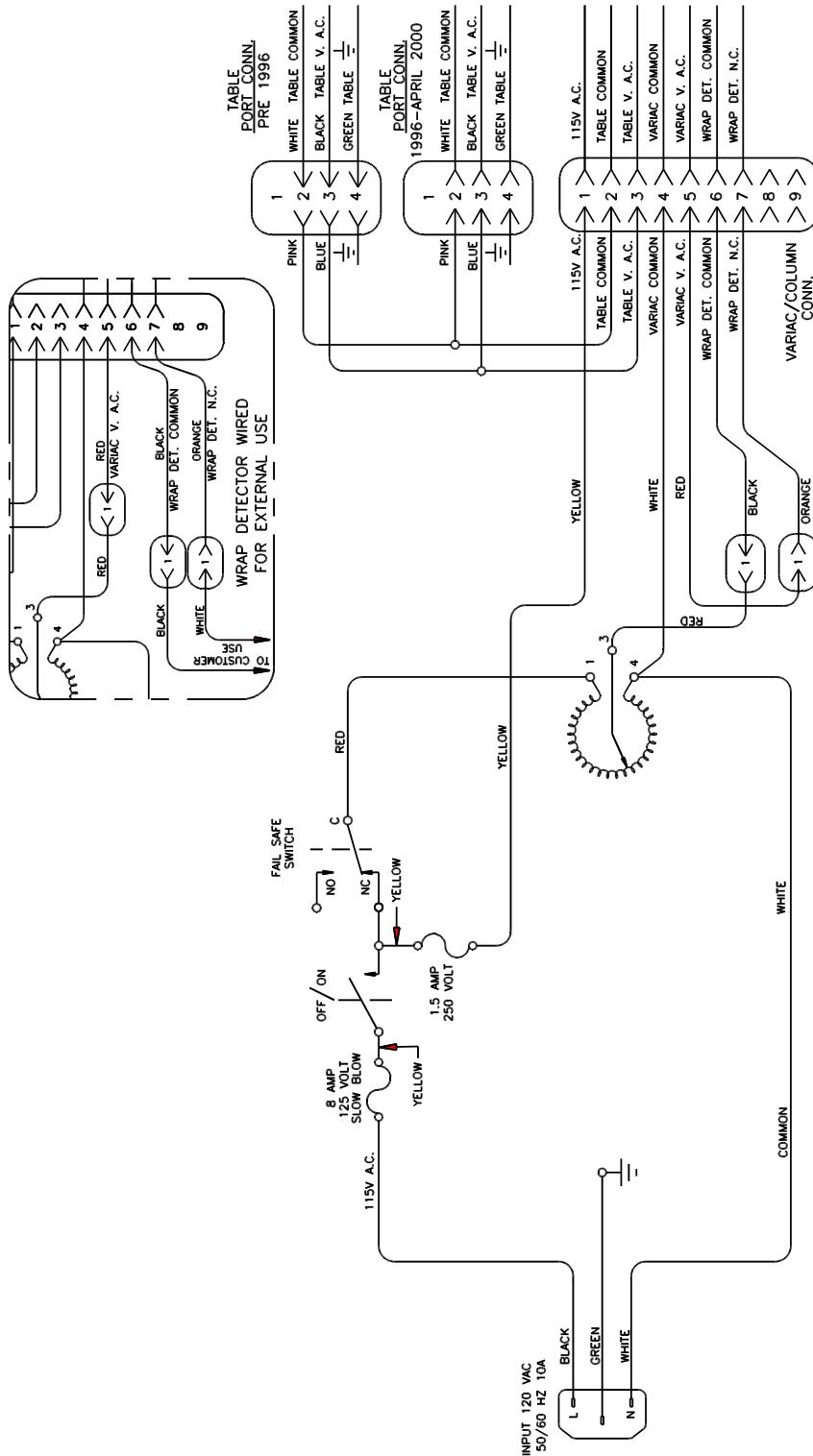
Column plugs for Leg mount variacs on platters **not wired** for a Wrap Detector have **three** contacts.



NOTE: DECALS #3790, 3788, 2059 & 7330 (ITEMS 8, 13, 30 & 32) HAVE BEEN INSTALLED FOR YOUR SAFETY AND THE SAFETY OF OTHERS. IF DECALS BECOME UNREADABLE REPLACE IMMEDIATELY.

1	2068	Receptacle, 4-pin, Rev. Sex	16	4709	Switch Adjusting Plate Assembly
2	2063	Socket CPC	17	2536	Micro Switch-Flat Blade-HD
3	2056	Receptacle, 4-pin, Std. Sex	18	1083	Nut Hex 6-32
4	2064	Pin, CPC	19	4374	Power Inlet Flanged
5	4486	Power Cord, 16-3 120V	20	4836	Power Inlet Retainer
6	2521	Screw PPH #8 x 3/8" Type 25	21	1643	Variac Shaft & Hub Sub-Asy. Type 2
7	2077	Receptacle, 9-pin, Std. Sex	22	1640	Variac Link Type 2
8	3790	Decal, Cord	23	1075	Flatwasher #10
9	1009	Fuse Holder (Solder type)	24	1233	Button Head Cap Screw 10-32 x 3/8"
	6697	Fuse Holder QC (Push-on type)	25	1071	Screw PTH 10-32 x 3/8"
10	2338	Fuse 1.5 AMP 250v	26	1006	Transformer 110v Replacement Kit
11	2265	Fuse 8 AMP 125v	27*	1005	Brush, Variac (Staco 1010)
12	1024	Toggle Switch SPST (Solder type)	28*	2103	Contact Asy Variac (Staco 1010)
	6695	Toggle Switch QC (Push-on type)	29*	4445	Brush, Variac (Powerstat 116CU)
13	3788	Decal, Fuse	30	2059	Power Supply Warning Decal
14	1078	Lockwasher #10 - Internal Tooth	31	5175	4-pin Receptacle Seal Cap
15	1069	Screw PTH 8-32 x 3/8"	32	7330	Decal Hazardous Voltage

* Refer to the transformer face plate for manufacturer's name and model number. Order replacement parts for the manufacturer specified. No replacement contact is required for Powerstat transformers. Transformers are interchangeable.



VARIAC ASSEMBLY, PRE APRIL 2000 WIRE SCHEMATIC