

SV70/63 SCDC SOFTWARE

Sv70/63 ver 2.exe

PRODUCT INFORMATION BULLETIN #6010

The SV70/63 SCDC Parameter Software kit gives you the capabilities listed below. The following instructions apply to both Pay-Out and Rewind Cards.

Table of Contents

Software Installation	1-2
Pixel Test	3
Software Upgrade	4
EEprom Data	5
Logged Error Data	6
Unit Test	6

Software Installation

Note: Minimum system requirements are Windows 95, 98 or NT and a Serial (RS232) port.

1. Copy the file Sv70/63 ver 2.exe from the floppy to any directory on the hard drive.
2. Run the file from the hard drive. You should get the following screen:

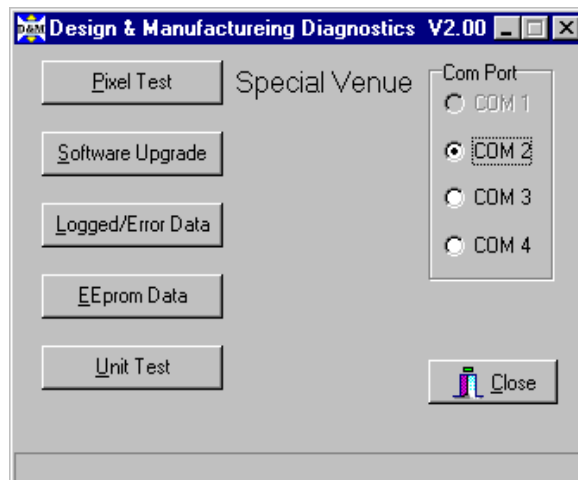


Figure 1

3. Plug the Reprogramming Cable, SCDC (part no. 4626) into the computer and select that com port. The software remembers the last com port used and defaults to that port.
4. Plug the 6 pin connector into the SCDC card next to the Red LED as shown below. The top surface is marked with AUP@ for correct orientation (see figure 2). The port on the Rewind card is in the same location as the Pay-Out Card but does not have the black cover.

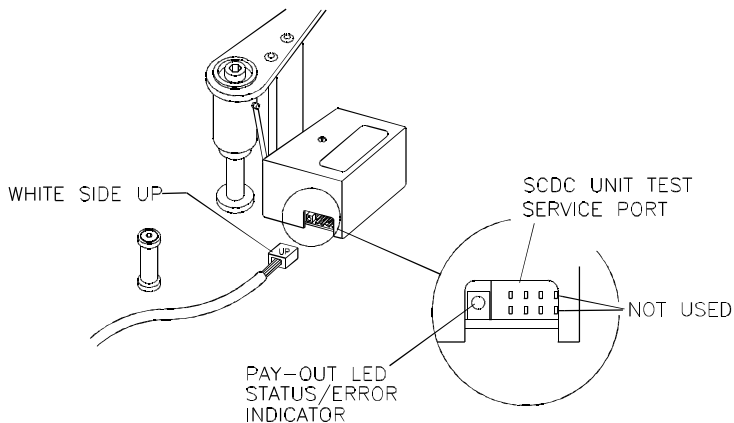


Figure 2

Note: Only the 6 pins closest to the LED indicator are used on both the Pay-Out and Rewind Cards. (See figures 2 and 3). The remaining two pins are not used.

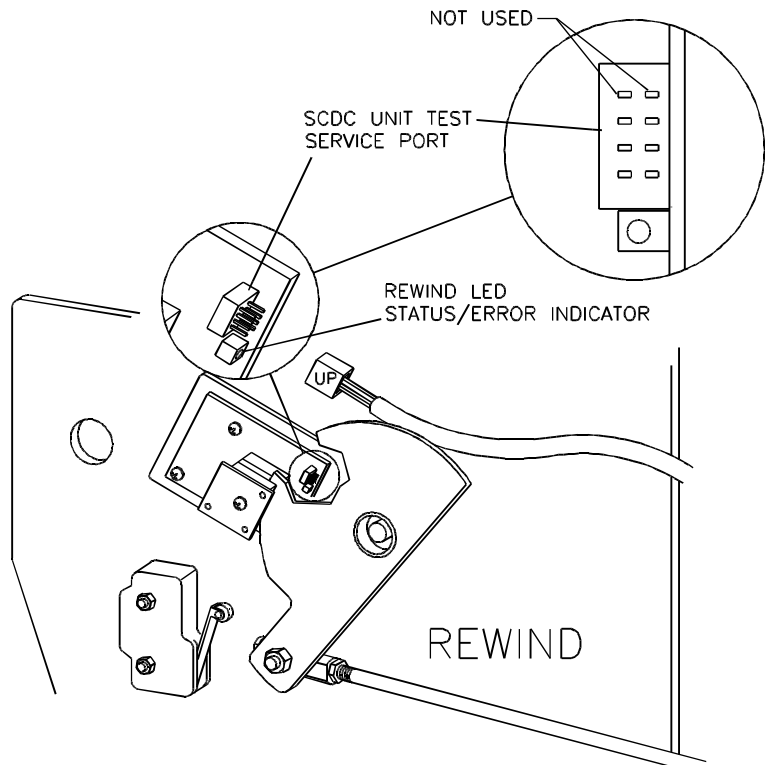


Figure 3

Pixel Test

(Read only)

This Pixel Test display (figure 4) shows the number of pixels covered by the Control Plate Arm Mask or the Rewind Sensor Disk as it moves through the Pay-Out or Rewind card. When the card is positioned correctly, a maximum of 240 pixels and a minimum of 10 pixels are covered as the mask moves from one extreme to the other.

Caution: Place the selector switch to the Pay-Out platter and turn the potentiometer to the lowest setting when you are performing the pixel test on the Pay-Out card. If you fail to take this precaution the Pay-Out platter will rotate at **high speed** when the Control Plate arm is moved to its on position.

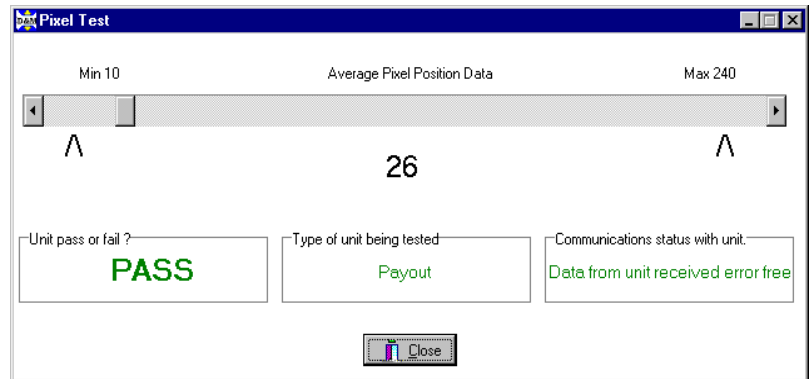


Figure 4

The Control Plate Card can be adjusted slightly by loosening the three screws securing the card to the control plate. Move the card to obtain the correct pixel count and tighten the screws. Recheck after screws are tightened. See PIB 6009 for Pay-Out Card installation and removal instructions.

To adjust the Rewind Card (figure 5), loosen the three screws securing the Rewind Control Mount Plate. Move the plate slightly and tighten the screws. Check the pixel count. Repeat this process until the correct pixel count is obtained. See PIB 6009 for Rewind Card installation and removal.

Note: The com cable plug will cover one of the three Rewind Control Mount Plate screws when it is connected. Remove the plug to tighten the hidden screw, reinstall the plug and recheck the pixel count.

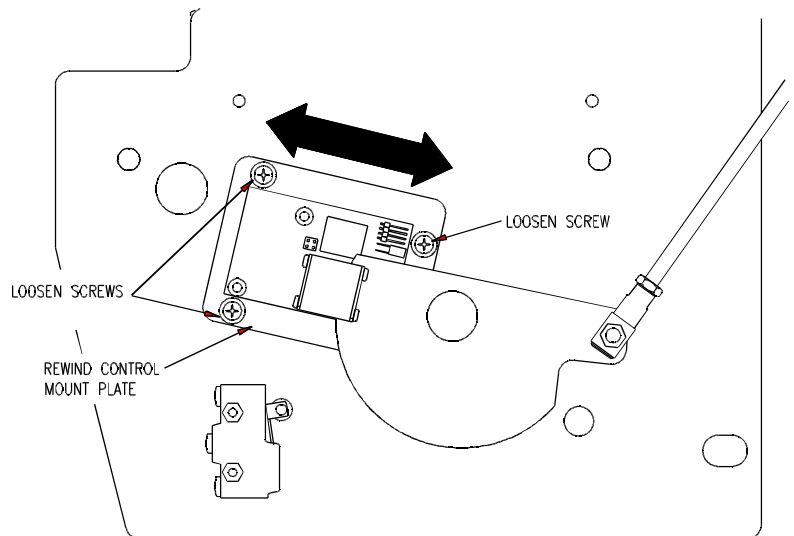


Figure 5

SOFTWARE UPGRADE

(Write only)

1. Open the SCDC software.
2. Pick the Software Upgrade Button (figure 6).

Note: Do not run the platter system during Software Upgrade. Attempting to do so will cause the program to shut down. All tests can be done while the platter system is in operation.

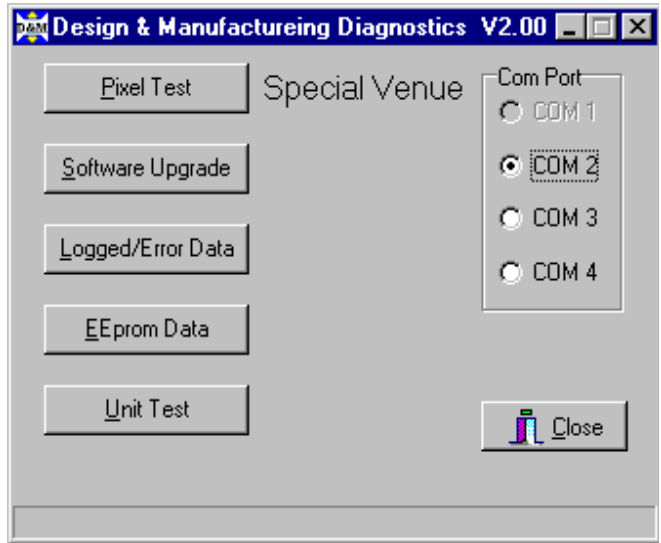


Figure 6

3. Pick the Version 2 Button (figure 7). It will take approximately 2 minutes to load the new software.
4. Pick the OK Button.
5. Pick the Close Button.

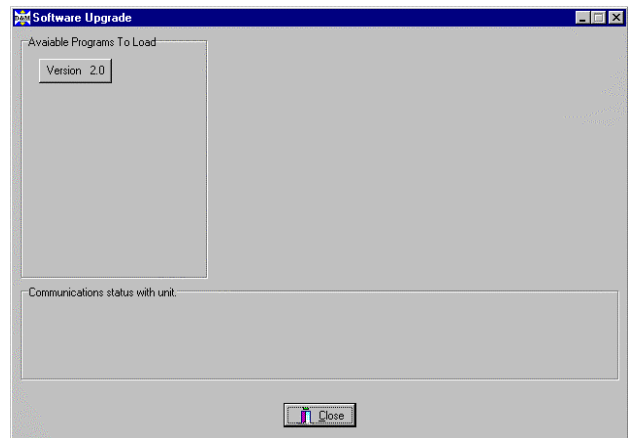


Figure 7

6. Pick the EEPROM Data Button (Figure 6).
7. Pick the Reload Defaults Button
8. Compare the values to the chart on page 5.

The software updating is now complete.

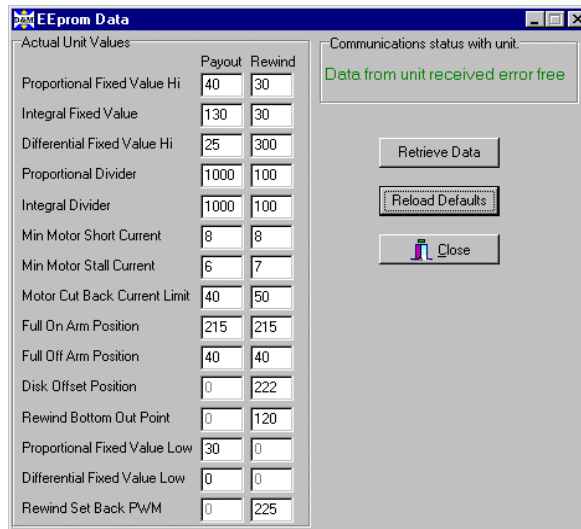


Figure 8

PAYOUT	VER 2
SV70/63	3/2/01
PROPORTIONAL FIXED VALUE	40
INTEGRAL FIXED VALUE	130
DIFFERENTIAL FIXED VALUE	25
PROPORTIONAL DIVIDER	1000
INTERGRAL DIVIDER	1000
MIN MOTOR SHORT CURRENT	8
MIN MOTOR STALL CURRENT	6
MOTOR CUT BACK CURRENT LIMIT	40
FULL ON ARM POSITION	215
FULL OFF ARM POSITION	40
DISK OFFSET POSITION	0
REWIND BOTTOM OUT POINT	0
PROPORTIONAL FIXED VALUE LOW	30
DIFFERENTIAL FIXED VALUE LOW	0

REWIND	VER 2
SV70/63	3/2/01
PROPORTIONAL FIXED VALUE	30
INTEGRAL FIXED VALUE	30
DIFFERENTIAL FIXED VALUE	300
PROPORTIONAL DIVIDER	100
INTERGRAL DIVIDER	100
MIN MOTOR SHORT CURRENT	8
MIN MOTOR STALL CURRENT	7
MOTOR CUT BACK CURRENT LIMIT	50
FULL ON ARM POSITION	215
FULL OFF ARM POSITION	40
DISK OFFSET POSITION	222
REWIND BOTTOM OUT POINT	120
PROPORTIONAL FIXED VALUE LOW	0
DIFFERENTIAL FIXED VALUE LOW	0
REWIND SET BACK PWM	225

LOGGED ERROR DATA

(Read only)

This Logged Error Data screen will report any current or logged error conditions and give some other statistical information. This display is used at the factory to determine card pass/failure. The customer can use this display to monitor the number of power-ups, hours of use and other data.

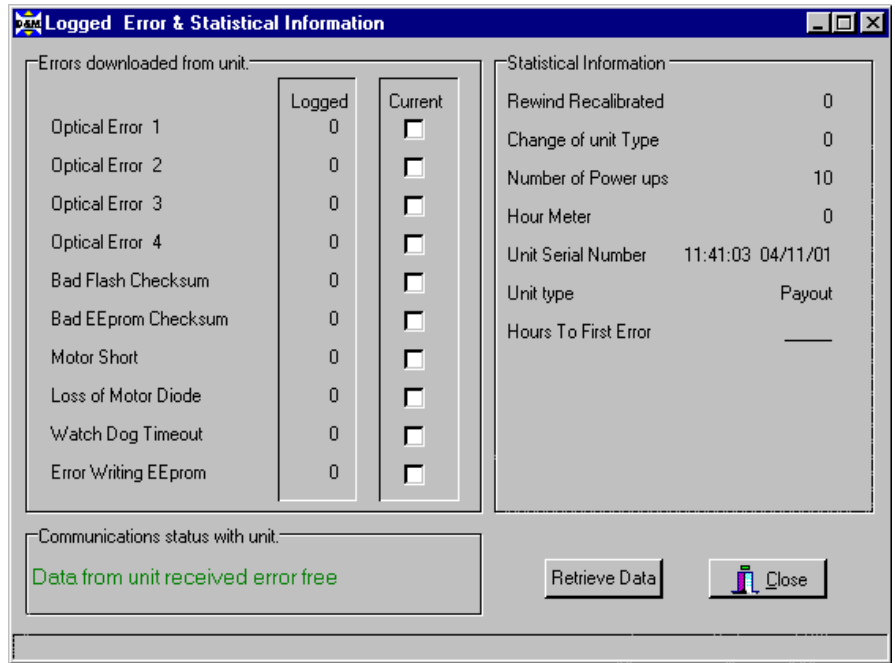


Figure 9

UNIT TEST

(Read only)

This Unit Test display (figure 10) gives you a visual electronic look of the unit at work. The com cable can be left connected to the card to view this display on a monitor if desired.

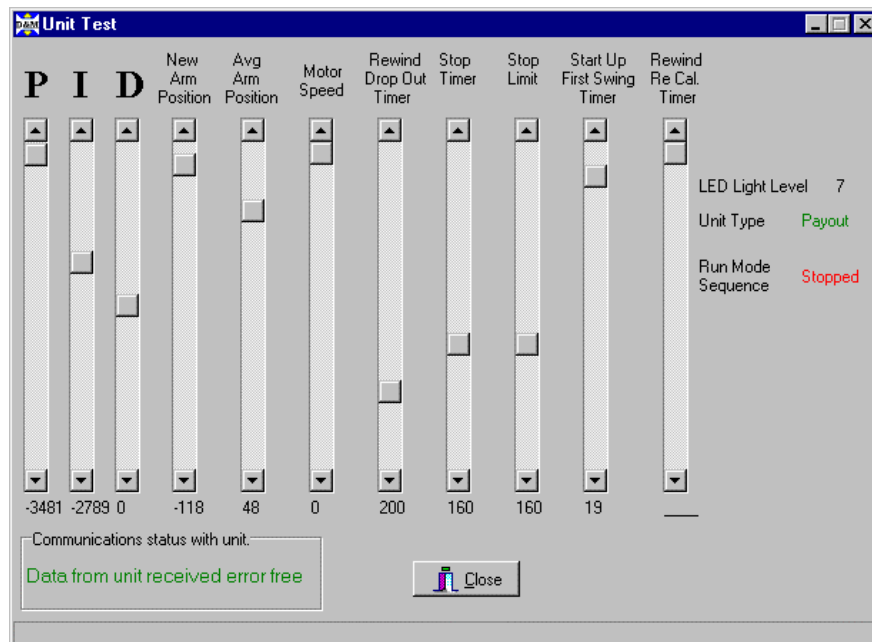


Figure 10