

# 70mm WRAP DETECTOR w/plug

## Installation and operation #6776

The 70mm Wrap Detector provides a means of shutting down the platter/projector after a payout control malfunction causes 20-30 wraps of film around the control plate. It is installed at the top of the column and connects to the column wiring harness at the column cap.

The Wrap Detector can be configured to shut down the platter or projector by means of single pin connectors in the power supply. Unless specified, the factory configures the Wrap Detector to disconnect power to the platter. It can also be configured to wire directly into the projector's fail safe circuit by means of an external cable.

This cable has two single pin connectors that connect to the wire harness in the power supply. The configuration of the single pin plugs for either mode of operation is shown in the Power Supply, Column\Arm schematic section of the Platter Operation Manual. (SWITCH SPECS: 15A 125, 250, 480 VAC \ 1/2A 125VDC, 1/4A 250VDC)

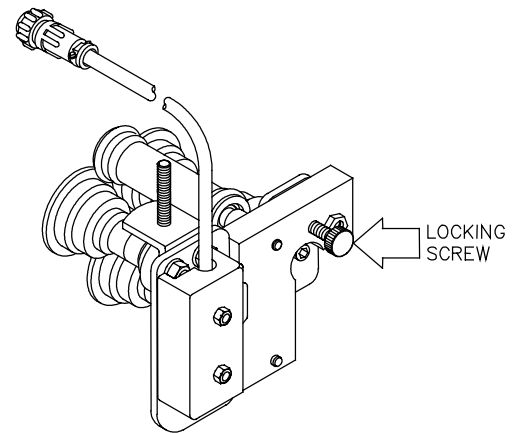


Figure 1

The 70mm Wrap Detector has a tensioning roller that provides enough film tension to allow a 12 foot free span of film between the platter and projector without support rollers. This roller can be removed if desired.

There is a locking screw located on the pivot bar as shown in Figure 1. This locking screw is used to lock the Wrap Detector in its normal operating position after it has tripped. The locking screw should only be tightened long enough to clear the malfunction. Once the malfunction has been cleared the locking screw should be loosened to allow the pivot bar to pivot freely.

The Wrap Detector is shipped as a left hand feed unit. If your platter installation requires right hand feed the Wrap Detector can be changed to a right hand feed unit as outlined on pages 2-3.

Film paths for left and right handed Wrap Detectors are shown in Figure 2.

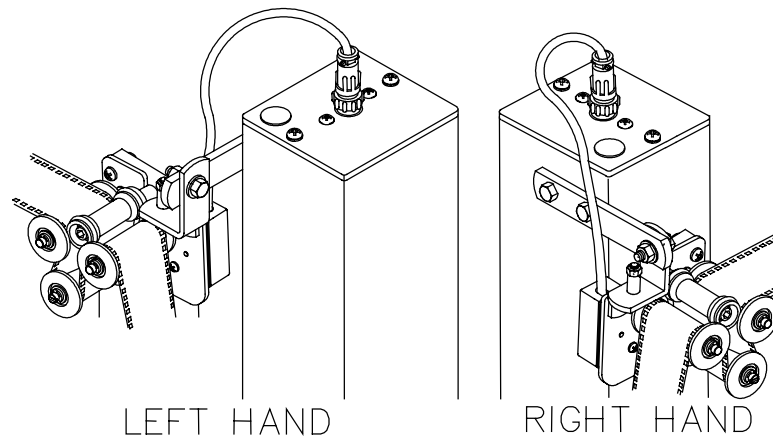
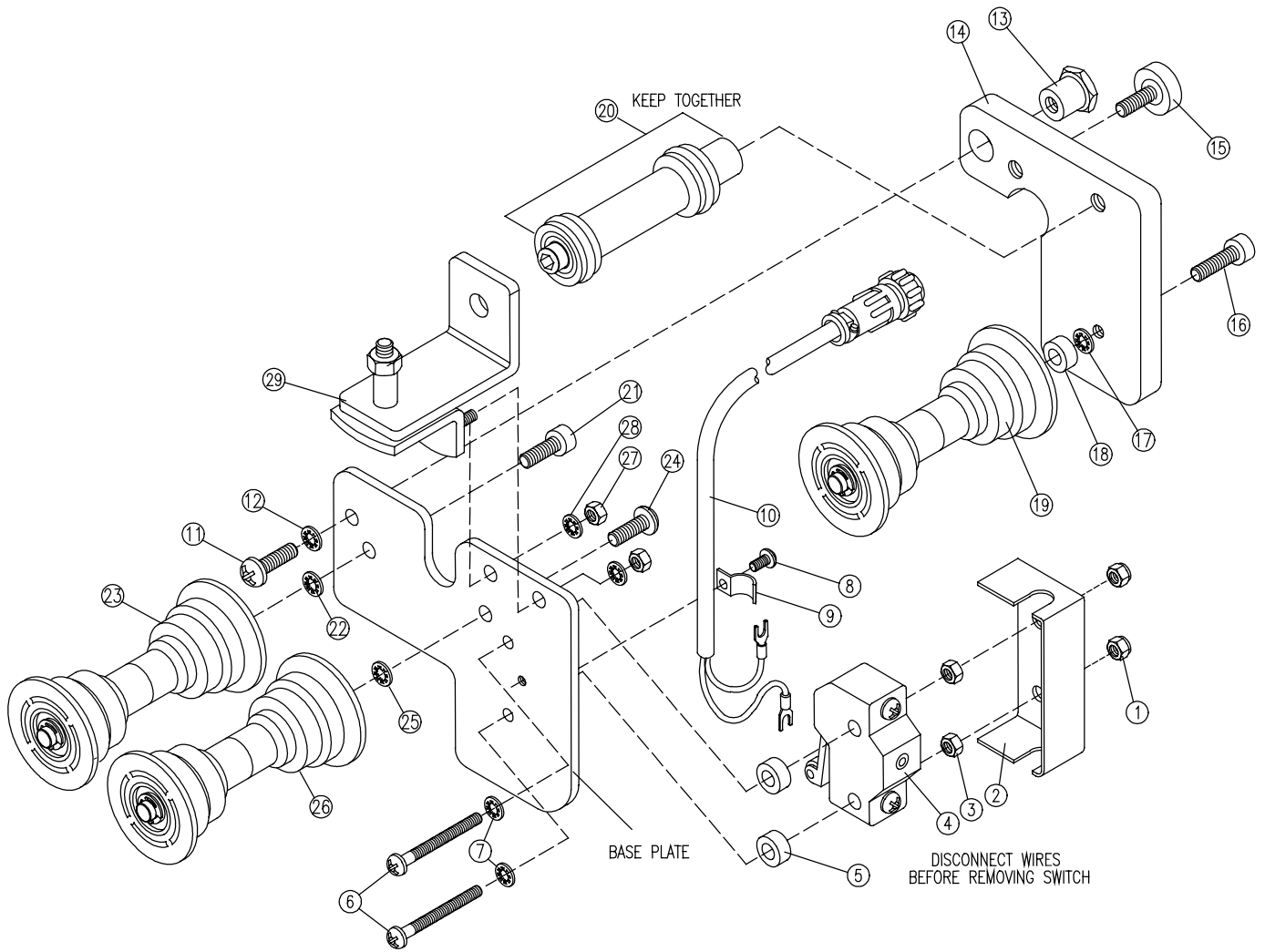


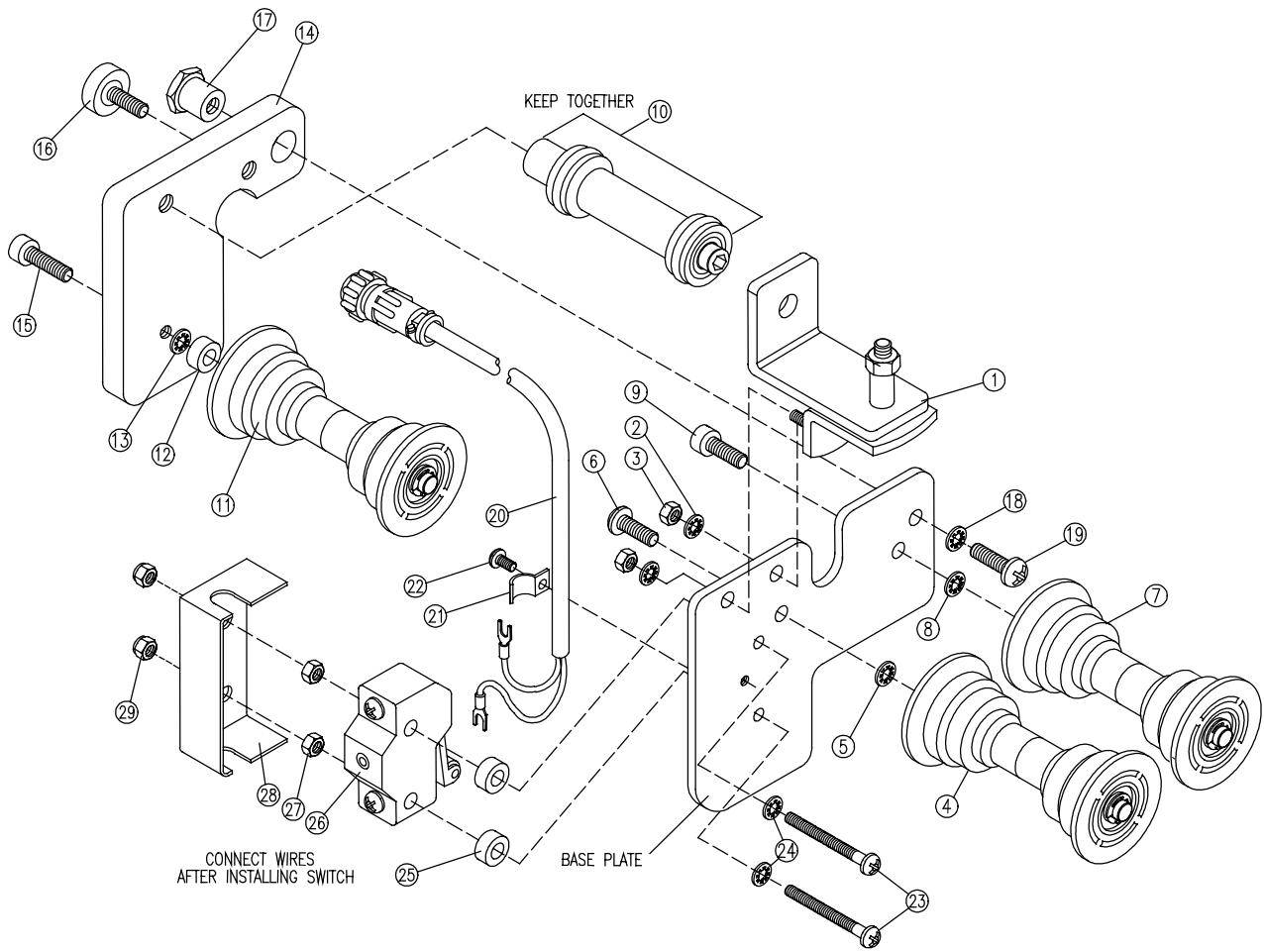
Figure 2



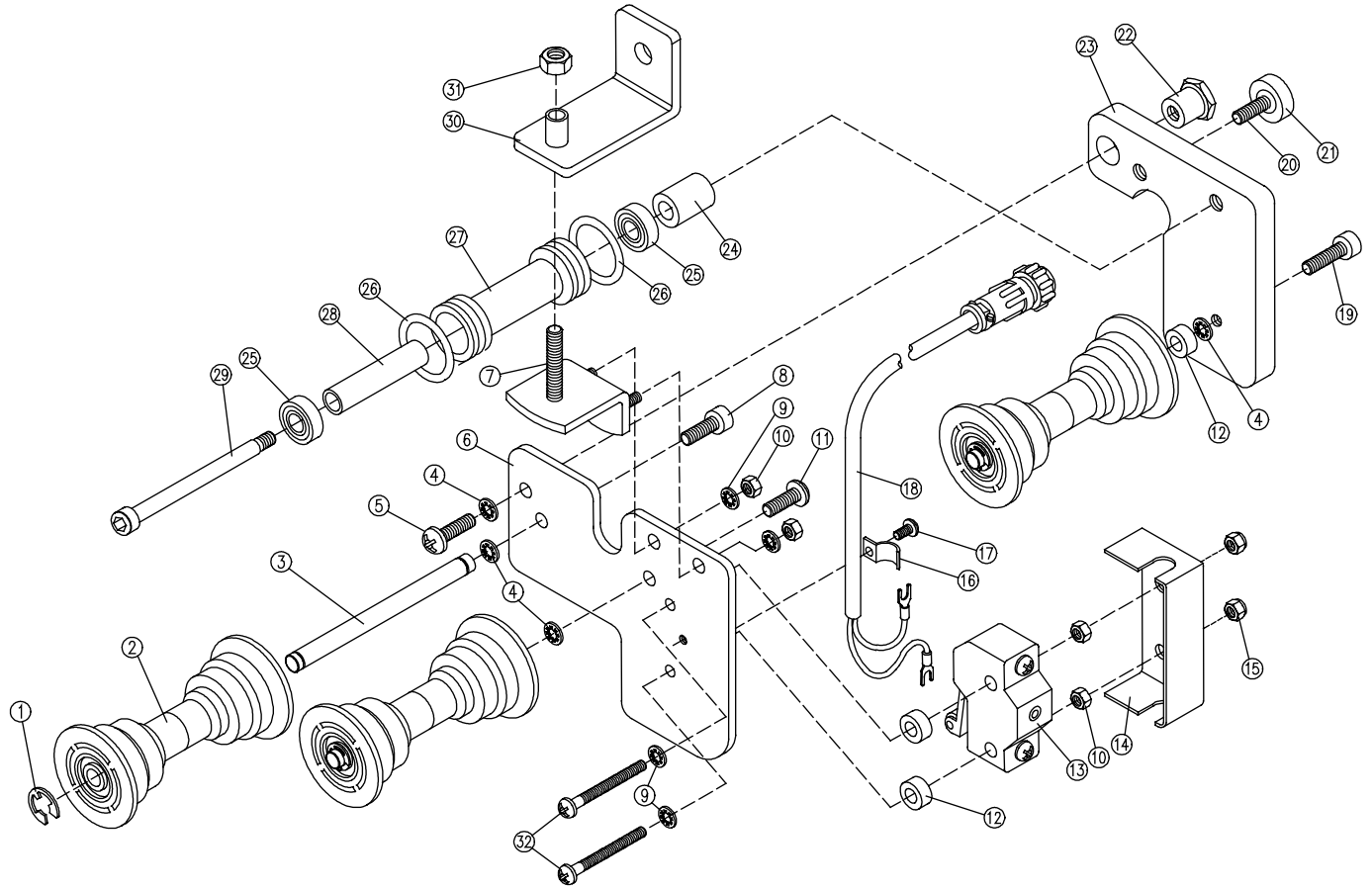
## CONVERSION FROM LEFT HAND FEED TO RIGHT HAND FEED

TOOLS NEEDED: Allen wrench 7/64, 1/8, 5/32  
 Nut driver 5/16  
 Phillips screwdriver (medium)

1. Disassemble the left hand Wrap Detector in order from 1 to 29.
2. Take the parts off and lay them in a straight horizontal line in front of you.  
See next page.
3. Assemble the parts as a right hand wrap detector, starting with the last part taken off and



work backwards through the line of parts.



## **PARTS BREAKDOWN**

### 6645 Wrap Detector SDC4 70mm 220v

1	1050	E-Ring 5/16"	17	1065	Screw PTH 6-32 X 1/4"
2	1715	Pulley Assembly 70mm 5/16 ID	18	6644	Wrap Detector Harness SDC4 220v
3	1654	Pulley Shaft-Castor 5/16 dia	19	4346	SHCS 10-32 X 7/8"
4	1078	Lockwasher #10 - Internal Tooth	20	3959	SHCS 10-32 X 3/4"
5	1072	Screw PTH 10-32 x 1/2"	21	2538	Shear Lock Knob 5/8" X #10
6	4338	Wrap Detector Base Plate 70mm	22	4341	Wrap Detector Pivot Bushing 70mm
7	4368	Wrap Detector Swivel Bracket Asy	23	4340	Wrap Detector Pivot Weight 70mm
8	1592	SHCS 10-32 X 2"	24	4344	Wrap Detector Roller Spacer 70mm
9	1138	Lockwasher #6-Internal Tooth	25	2407	Bearing 5/8" OD X 1/4" ID
10	1083	Nut Hex 6-32	26	3390	O-Ring 1/8" X 13/16" ID X 1 1/16" OD
11	1071	Screw PTH 10-32 X 3/8"	27	4342	Wrap Detector Tensioner Roller 70mm
12	2400	Spacer - 3/8" Slum. Round #10 X 1/8"	28	4343	Wrap Detector Tensioner Spacer 70mm
13	2413	Micro Switch - Short Roller Arm - HD	29	4347	SHCS 1/4-20 X 3 1/4"
14	3387	Wrap Detector Switch Cover	30	5077	Swivel Mount Bracket w/stoff 70mm
15	1084	Locknut, Nylon Insert 6-32	31	2449	Locknut Nylon Insert 10-32
16	3393	Cable Clamp	32	1078	Lockwasher #10 Internal Tooth