

# 35 mm WRAP DETECTOR w/plug

## Installation and Operation #6777

The Wrap Detector provides a means of shutting down the platter/projector after a payout control malfunction causes 20-30 wraps of film around the control plate. It is installed at the top of the column and connects to the column wiring harness at the column cap.

The Wrap Detector can be configured to shut down the platter or projector by means of single pin connectors in the power supply. Unless specified, the factory configures the Wrap Detector to disconnect power to the platter. It can also be configured to wire directly into the projector's fail safe circuit by means of an external cable. This cable has two single pin connectors that connect to the wire harness in the power supply. The configuration of the single pin plugs for either mode of operation is shown in the Power Supply, Column\Arm schematic section of the Platter Operation Manual. (SWITCH SPECS: 15A 125, 250, 480 VAC \ 1/2A 125VDC, 1/4A 250VDC)

The Wrap Detector has a tensioning roller that provides enough film tension to allow a 12 foot free span of film between the platter and projector without support rollers. This tensioning roller can be removed if desired.

There is a locking screw located on the pivot bar as shown in Figure 1. This locking screw is used to lock the Wrap Detector in its normal operating position after it has tripped. The locking screw should only be tightened long enough to clear the malfunction. Once the malfunction has been cleared the locking screw should be loosened to allow the pivot bar to pivot freely.

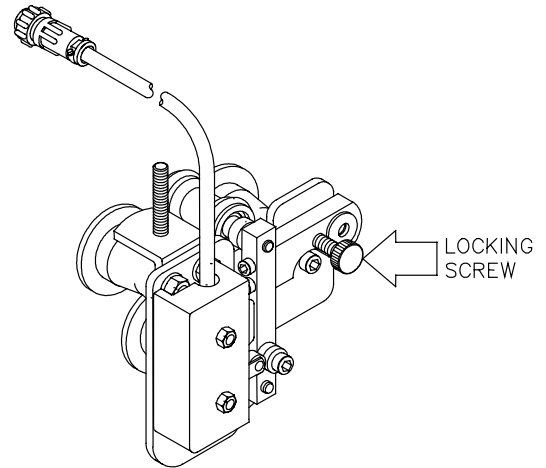


Figure 1

The Wrap Detector is shipped as a left hand feed unit. If your platter installation requires right hand feed the Wrap Detector can be changed to a right hand feed unit as outlined on pages 2-3.

Film paths for left and right handed Wrap Detectors are shown in Figure 2.

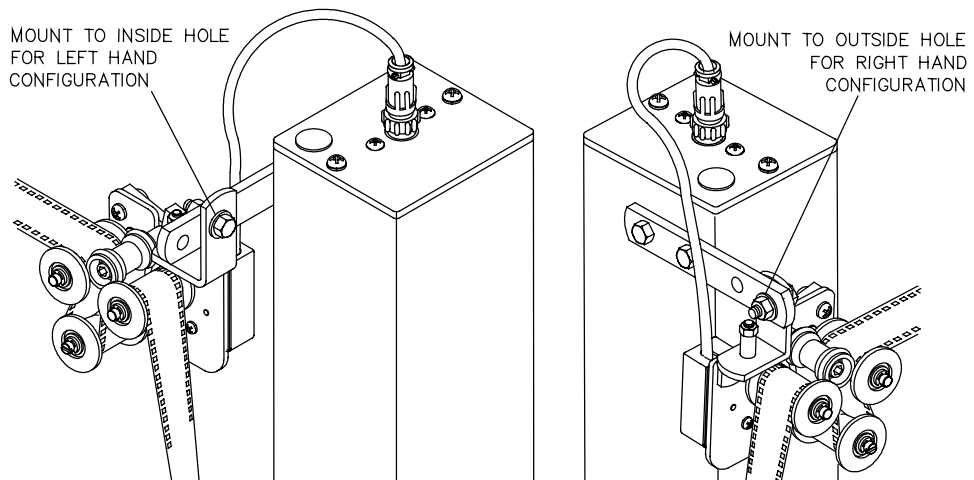
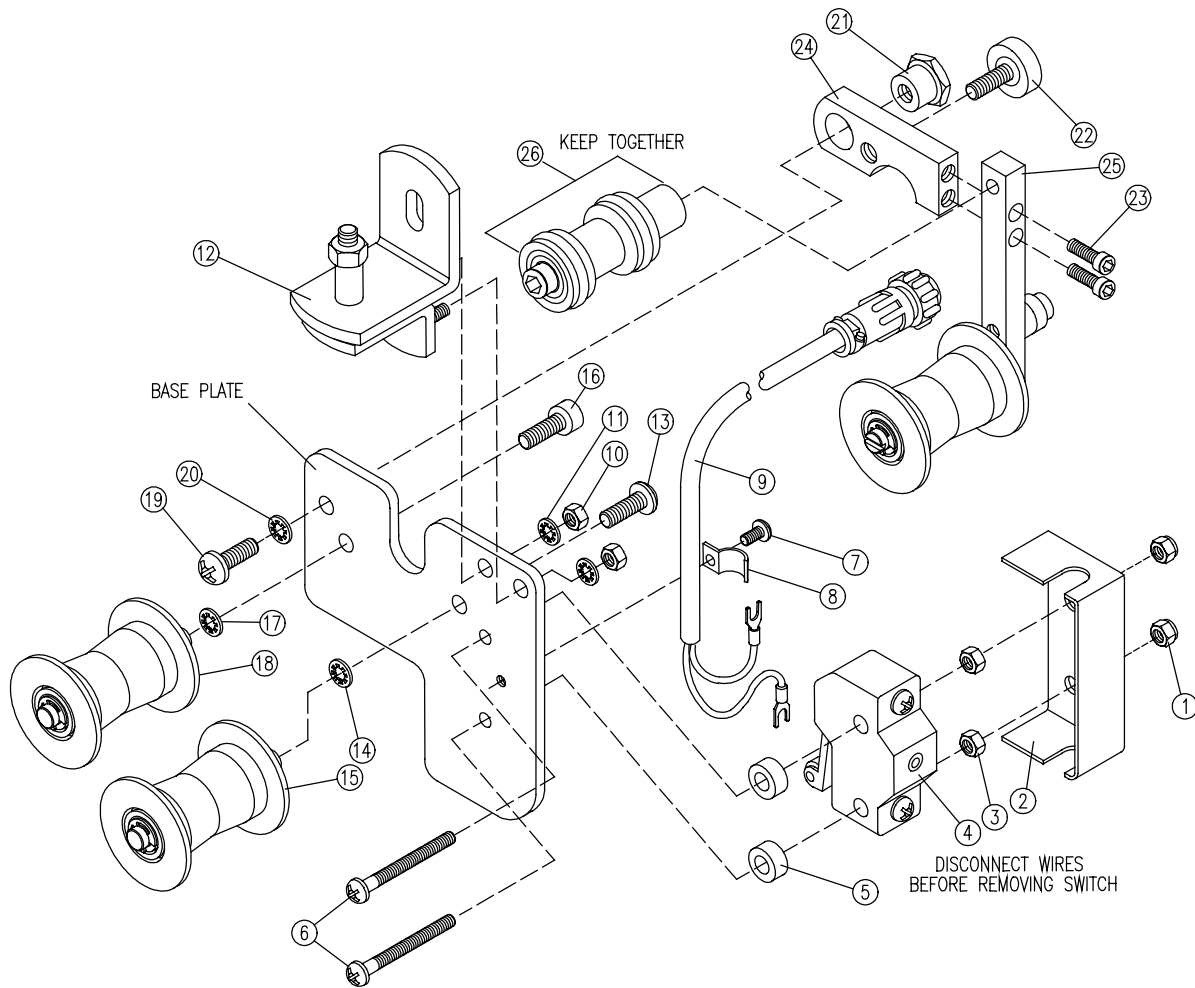


FIGURE 2

## WRAP DETECTOR (LEFT HAND FEED)

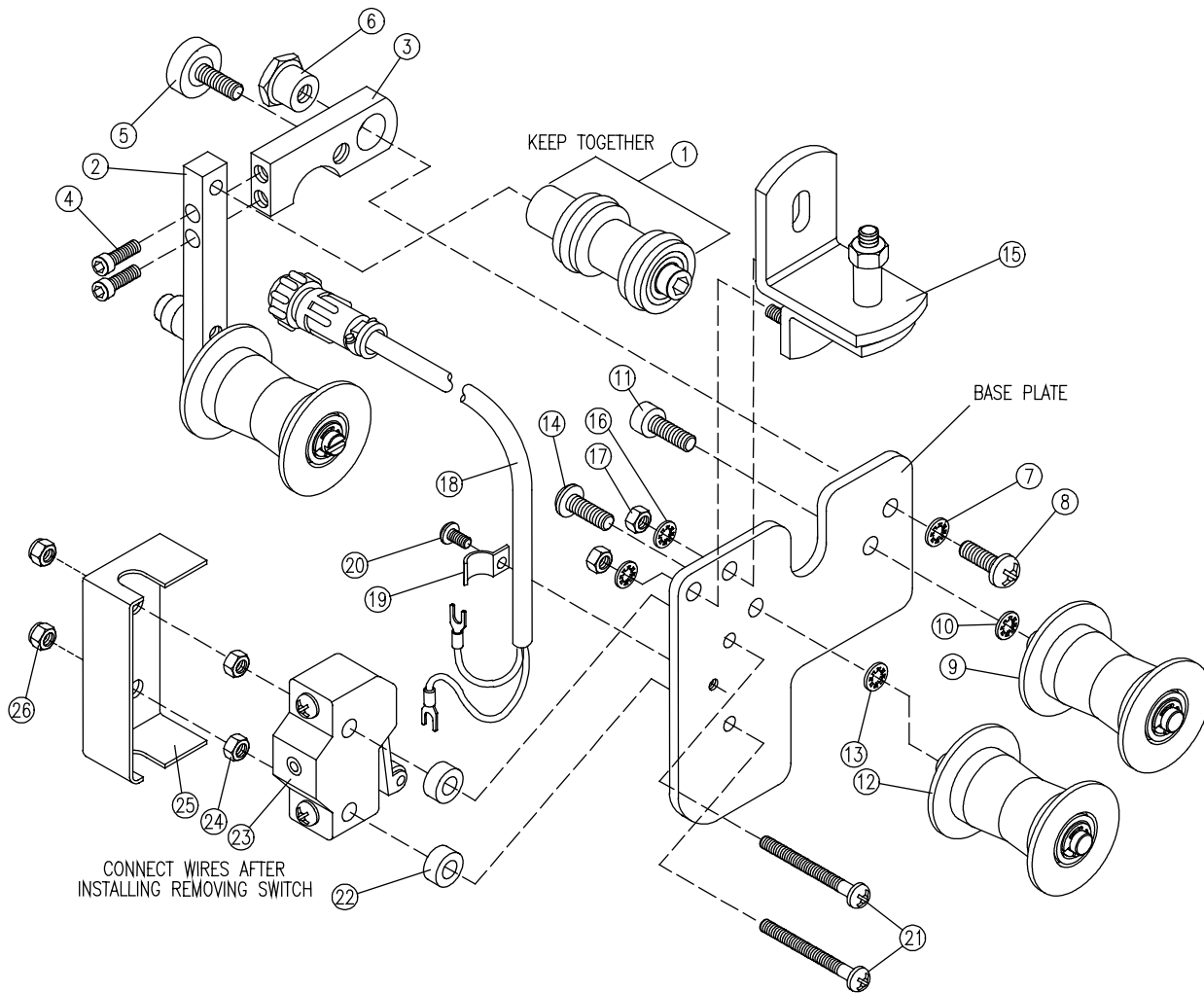


### CONVERSION FROM LEFT HAND FEED TO RIGHT HAND FEED

#### TOOLS NEEDED:

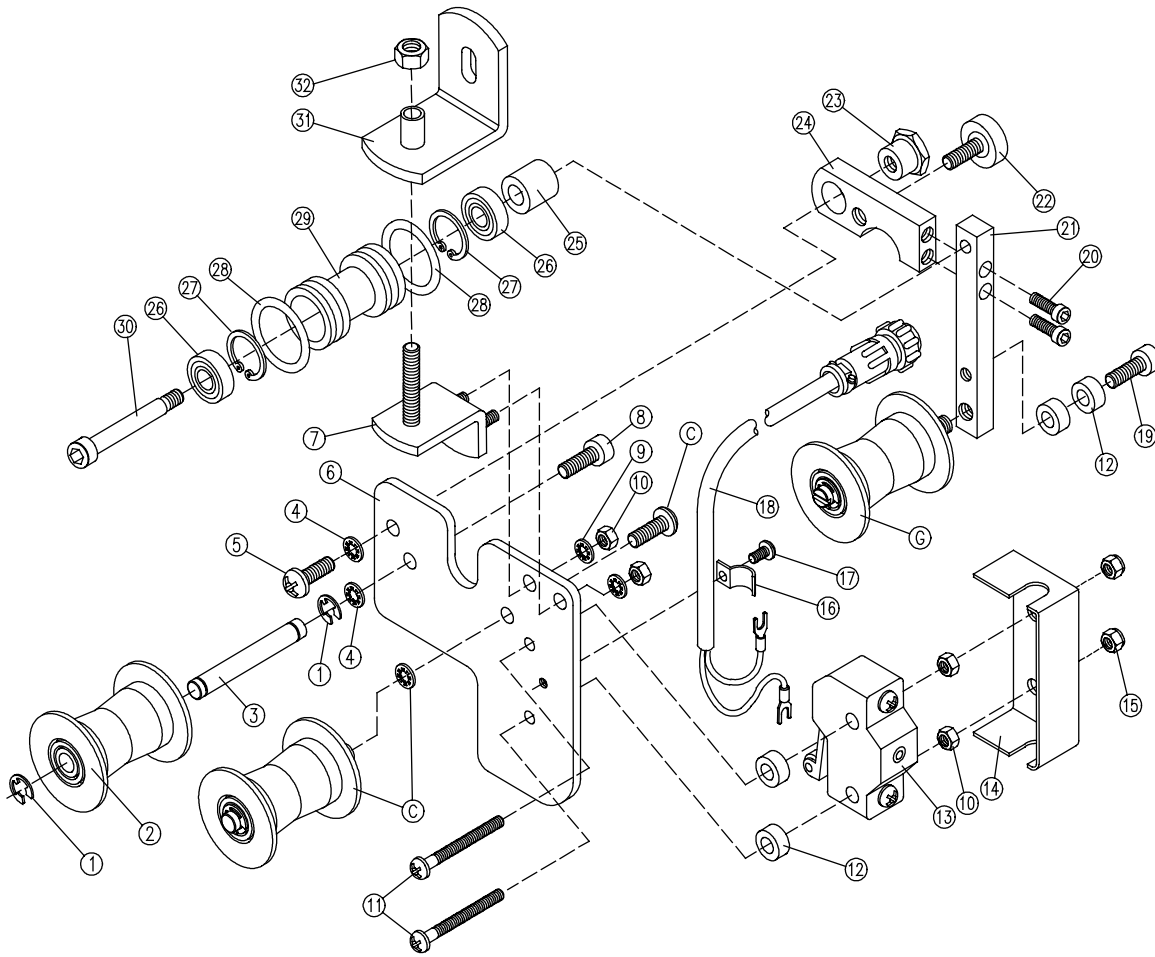
Allen wrench 7/64, 1/8, 5/32  
Nut driver 5/16  
Phillips screwdriver (medium)  
Straight blade screwdriver (small)

1. Disassemble the left-handed Wrap Detector in order from 1 to 26.
2. Take the parts off and lay them in a straight horizontal line in front of you.  
See next page.



backward through the line of parts.

**NOTE:** Lay pieces 2 & 3 on a flat surface before tightening the allen bolts (items 4). This will insure proper alignment.



## **PARTS BREAKDOWN**

### 6646 Wrap Detector SCDC4 35mm 220v

C	1447	Pulley Shaft #6 & Pulley Asy 35mm.	16	3393	Cable Clamp
G	1504	Column Shaft & Pulley Asy 35mm.	17	1065	Screw PTH 6-32 X 1/4"
1	1050	E-Ring 5/16"	18	6644	Wrap Detector Harness SCDC4 220v
2	2881	Pulley 35mm 5/16" ID	19	3766	SHCS 10-24 x 1/2"
3	1129	Pulley Shaft #6	20	3397	SHCS 6-32 X 1/2"
4	1078	Lockwasher #10 - Internal Tooth	21	3384	Wrap Detector Roller Bar
5	1071	Screw PTH 10-32 X 3/8"	22	3735	Wrap Detector Locking Knob Asy
6	3381	Wrap Detector Base Plate	23	3385	Wrap Detector Pivot Bushing
7	3416	Wrap Detector Swivel Brkt. Asy.	24	3383	Wrap Detector Pivot Bar
8	1592	SHCS 10-32 X 1/2"	25	3453	Wrap Detector Roller Spacer
9	1138	Lockwasher #6 - Internal Tooth	26	2407	Bearing 5/8" OD X 1/4" ID
10	1083	Nut Hex 6-32	27	3310	Retaining Ring Internal 5/8" Bowed
11	1068	Screw PPH 6-32 x 1 1/2"	28	3390	O-Ring 1/8" X 13/16" ID X 1 1/16" OD
12	2400	Spacer - 3/8" Slum. Rnd. #10 X 1/8"	29	3386	Wrap Detector Tensioner Roller
13	2413	Micro Switch - Short Roller Arm -HD	30	3392	Shoulder Screw 1/4" X 1 2"
14	3387	Wrap Detector Switch Cover	31	4610	Swivel Mount Bracket w/stoff 35m
15	1084	Locknut, Nylon Insert 6-32	32	2449	Locknut Nylon Insert 10-32